

PROGETTO DI RECUPERO DI COMPLESSO RESIDENZIALE
COSTITUITO DA 13 UNITA' ABITATIVE PREVIA DEMOLIZIONE
DI FABBRICATI AD USO ARTIGIANALE/RESIDENZIALE

UBICAZIONE:
Via Simoncini nc. 2-4-6, località Masotti, Serravalle P.se (PT)

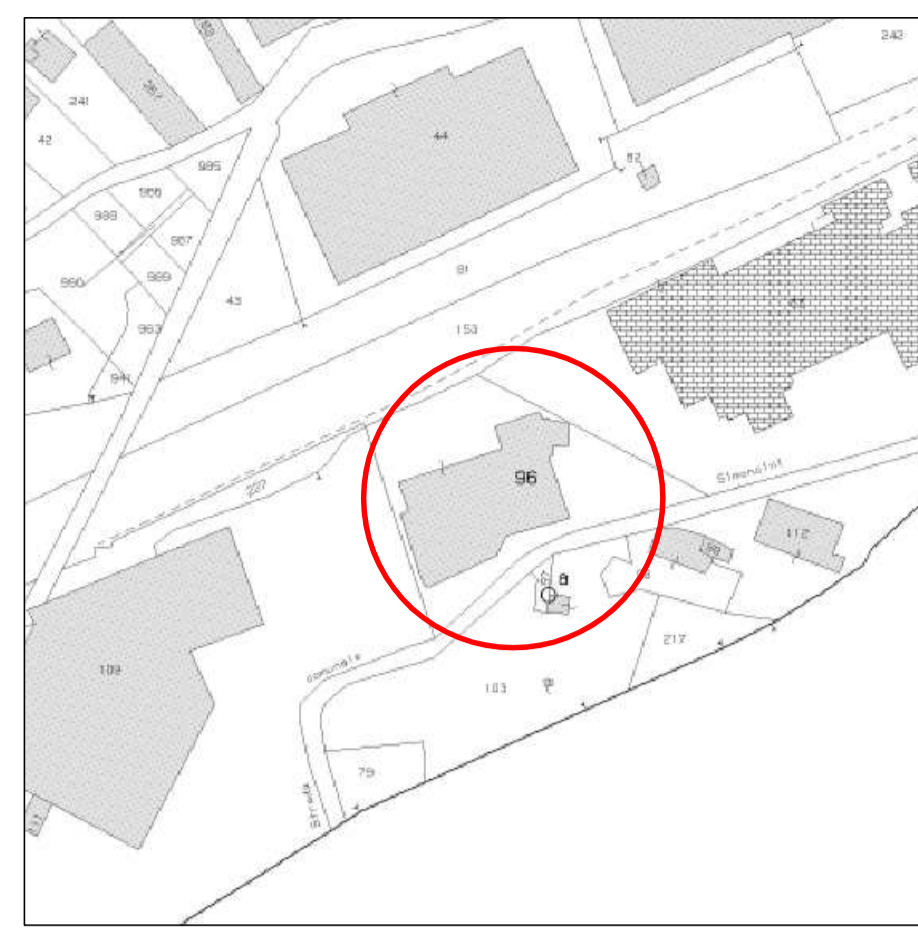
COMMITTENTE:
MASSA

DESCRIZIONE:
INQUADRAMENTO URBANISTICO
estratti cartografici, calcoli planivolumetrici,
piante e sezione

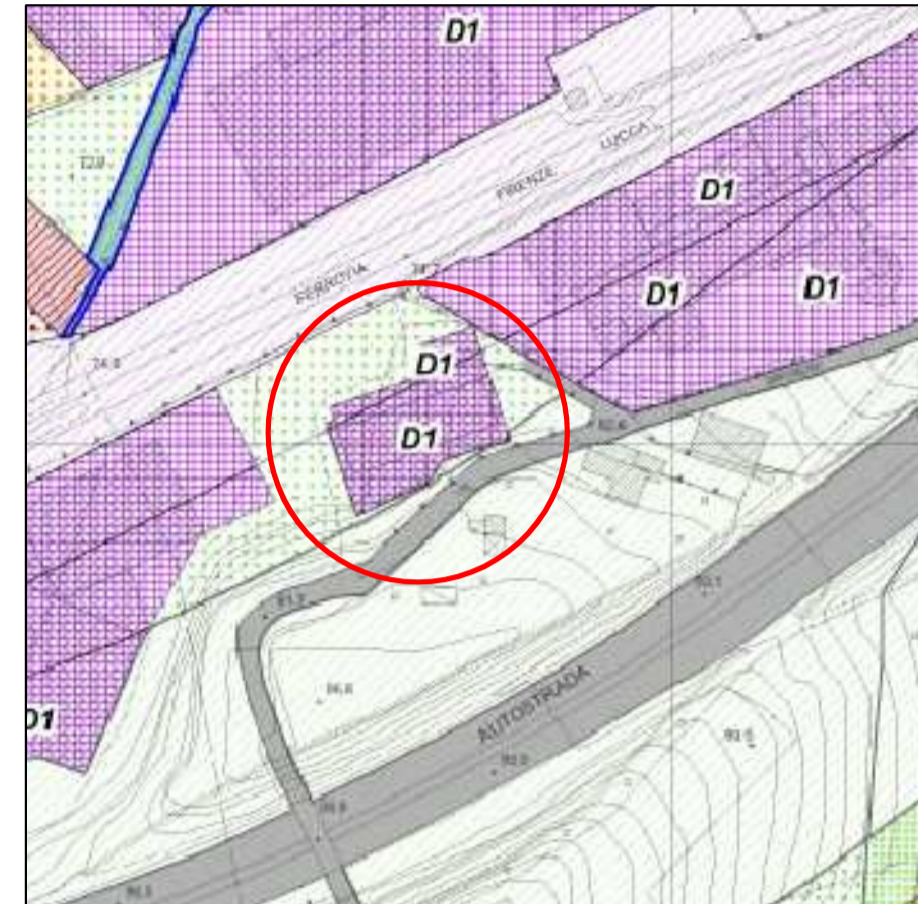
TAVOLA
1

Stato Attuale
Scala:
1/200-1/400-1/2000

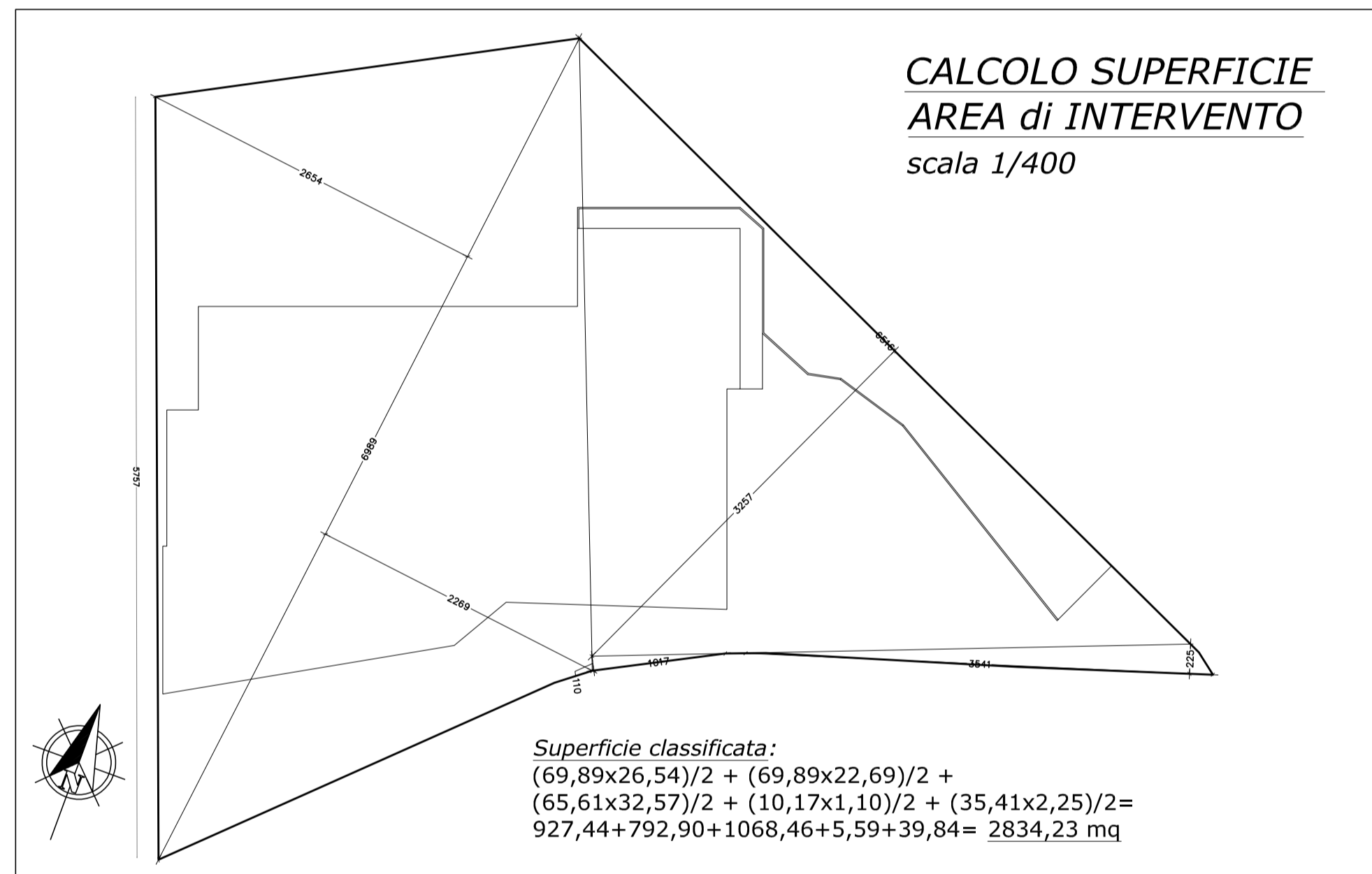
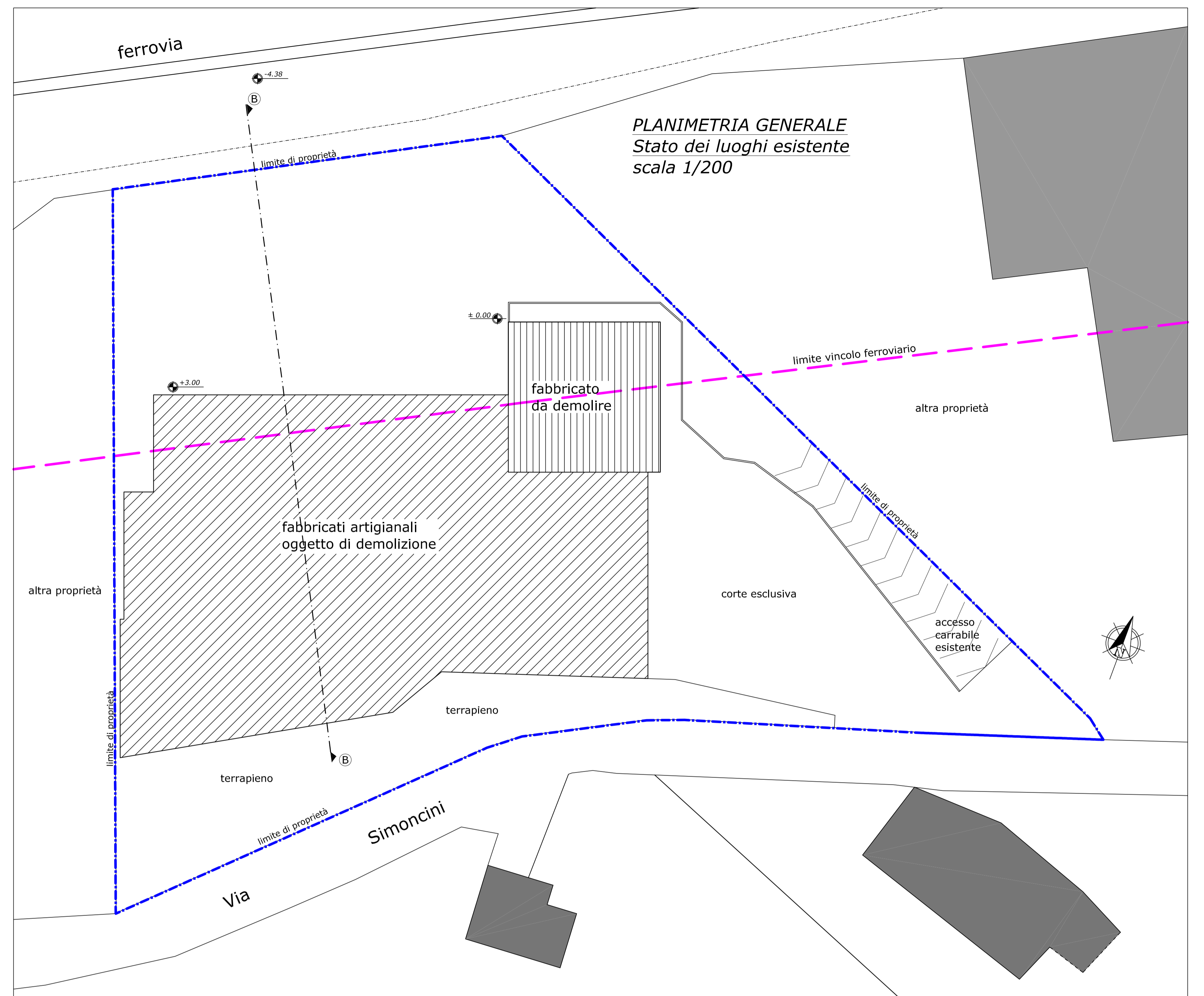
Il Progettista
Il Committente



Estratto Catastale
Foglio n. 8 - Mappale n.96
scala 1/2000



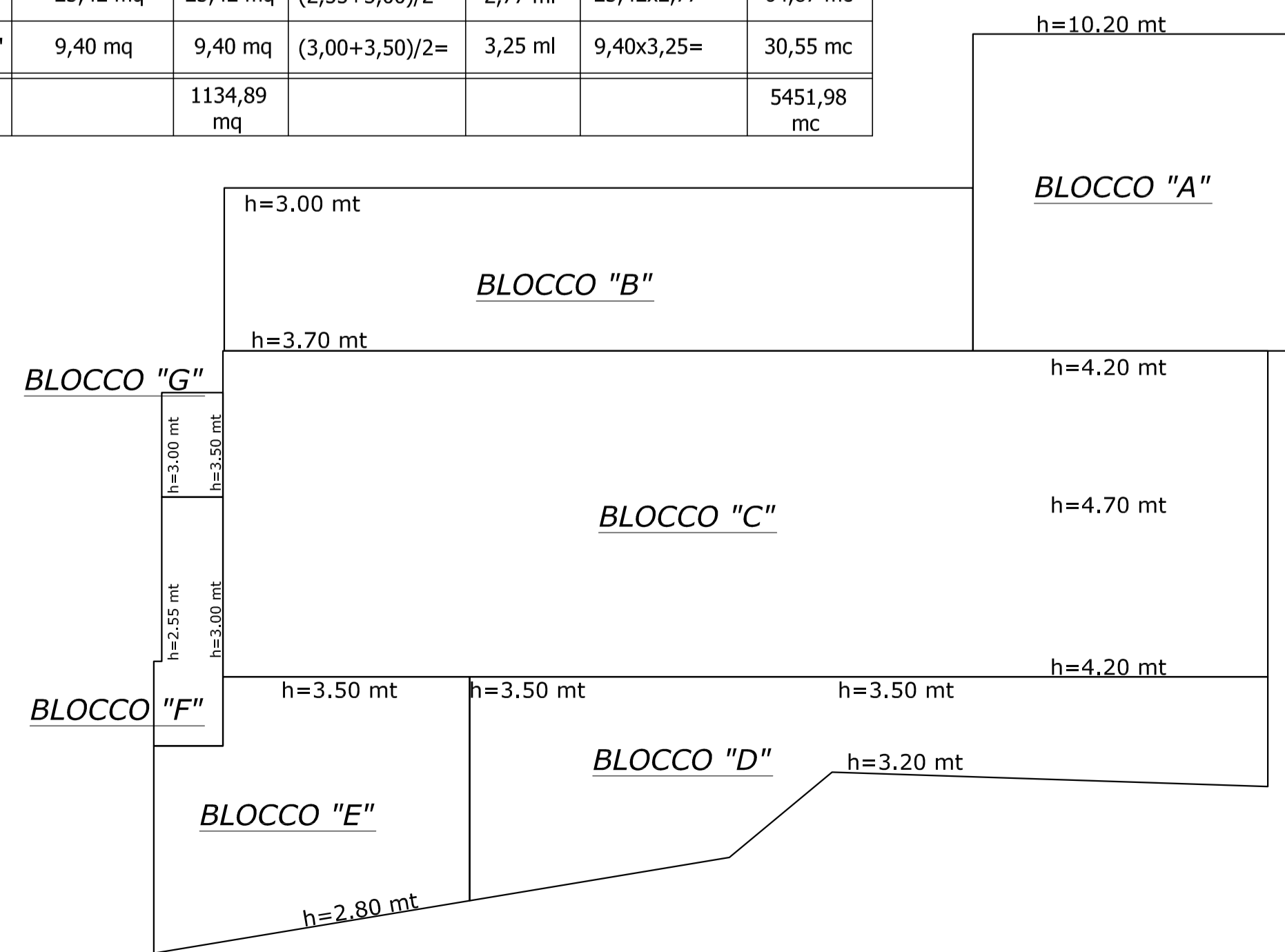
Estratto di P.R.G.
Foglio n.5
scala 1/2000



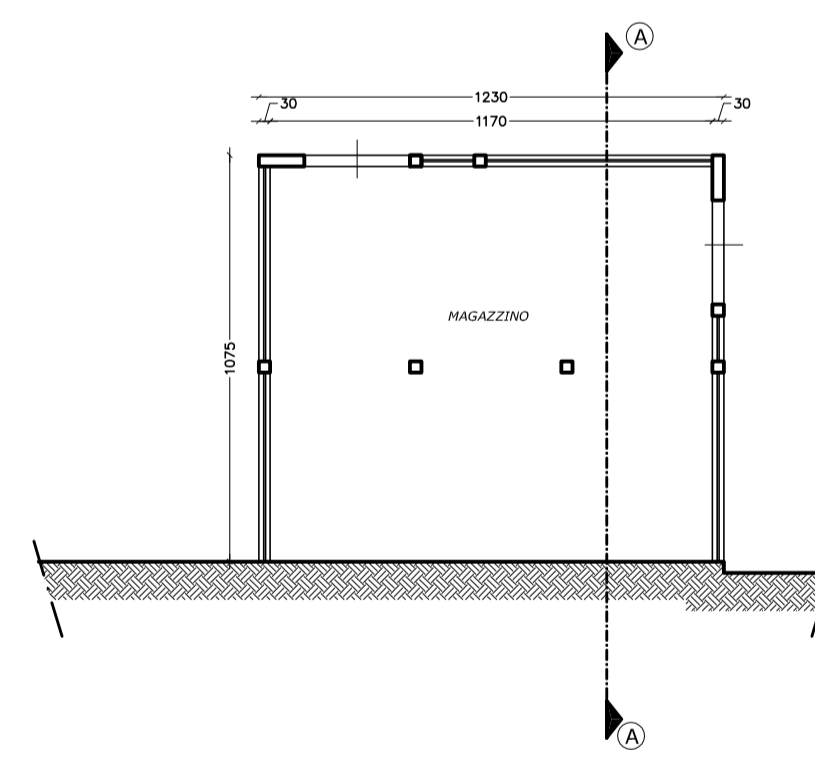
Superficie classificata:
 $(69,89 \times 26,54) / 2 + (69,89 \times 22,69) / 2 +$
 $(65,61 \times 32,57) / 2 + (10,17 \times 1,10) / 2 + (35,41 \times 2,25) / 2 =$
 $927,44 + 792,90 + 1068,46 + 5,59 + 39,84 = 2834,23 \text{ mq}$

CALCOLI TECNICI STATO ATTUALE

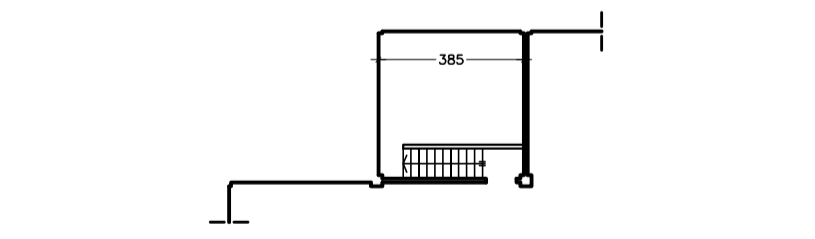
| | SUPERFICIE | ALTEZZA MEDIA | VOLUME |
|------------|--|--|--|
| BLOCCO "A" | $(12,30 \times 12,15) = 149,44 \text{ mq}$ | $(10,20 + 11,17) / 2 = 10,95 \text{ ml}$ | $149,44 \times 10,95 = 1636,37 \text{ mc}$ |
| BLOCCO "B" | $(28,70 \times 6,25) = 179,37 \text{ mq}$ | $(3,00 + 3,70) / 2 = 3,35 \text{ ml}$ | $179,37 \times 3,35 = 600,89 \text{ mc}$ |
| BLOCCO "C" | $(40,05 \times 12,50) = 500,62 \text{ mq}$ | $(4,20 + 4,70) / 2 = 4,45 \text{ ml}$ | $500,62 \times 4,45 = 2227,76 \text{ mc}$ |
| BLOCCO "D" | 163,60 mq | $(3,50 + 3,20) / 2 = 3,35 \text{ ml}$ | $163,60 \times 3,35 = 548,06 \text{ mc}$ |
| BLOCCO "E" | 109,04 mq | $(3,50 + 2,80) / 2 = 3,15 \text{ ml}$ | $109,04 \times 3,15 = 343,48 \text{ mc}$ |
| BLOCCO "F" | 23,42 mq | $(2,55 + 3,00) / 2 = 2,77 \text{ ml}$ | $23,42 \times 2,77 = 64,87 \text{ mc}$ |
| BLOCCO "G" | 9,40 mq | $(3,00 + 3,50) / 2 = 3,25 \text{ ml}$ | $9,40 \times 3,25 = 30,55 \text{ mc}$ |
| TOTALE | 1134,89 mq | | 5451,98 mc |



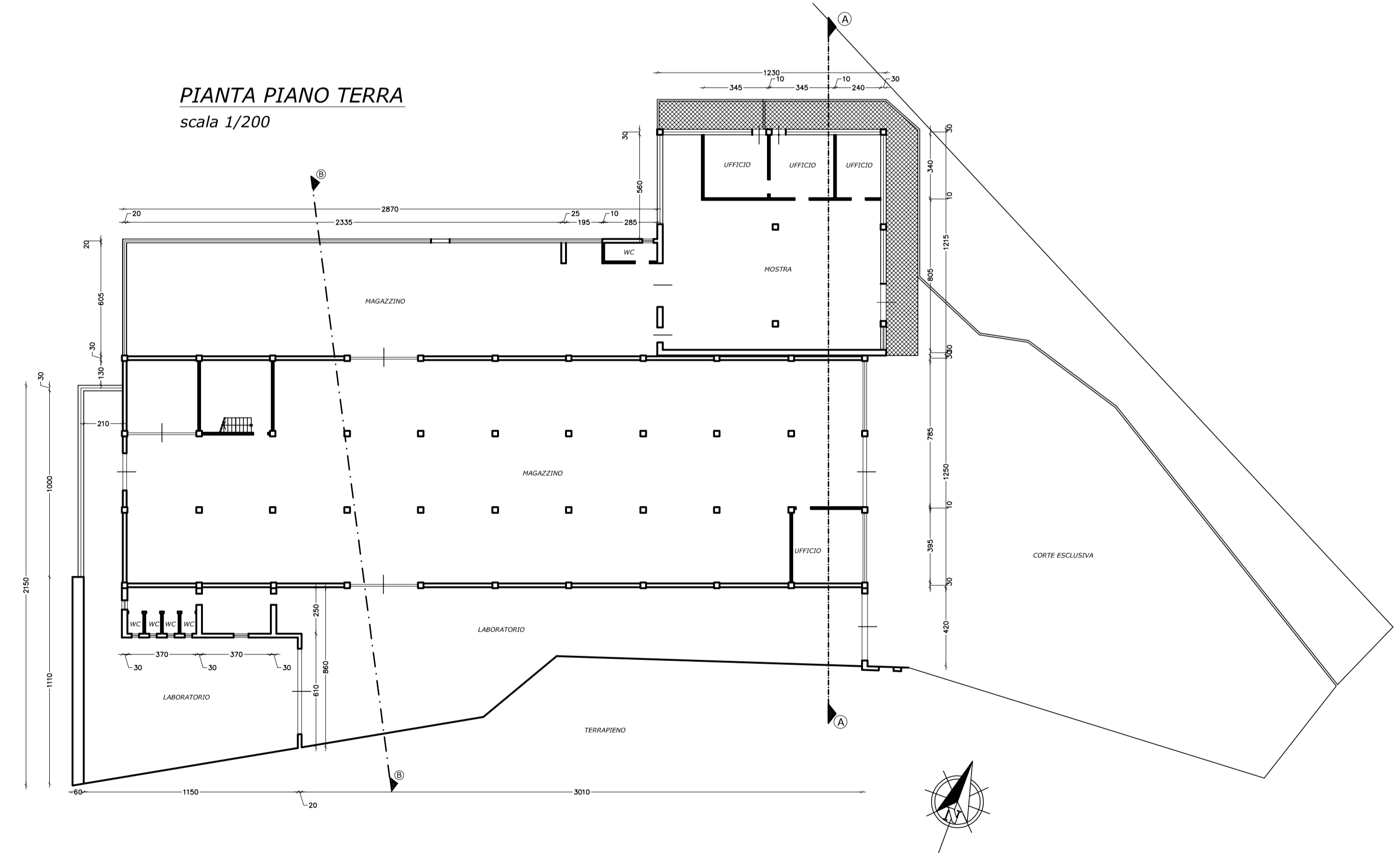
PIANTA PIANO SEMINTERRATO
scala 1/200



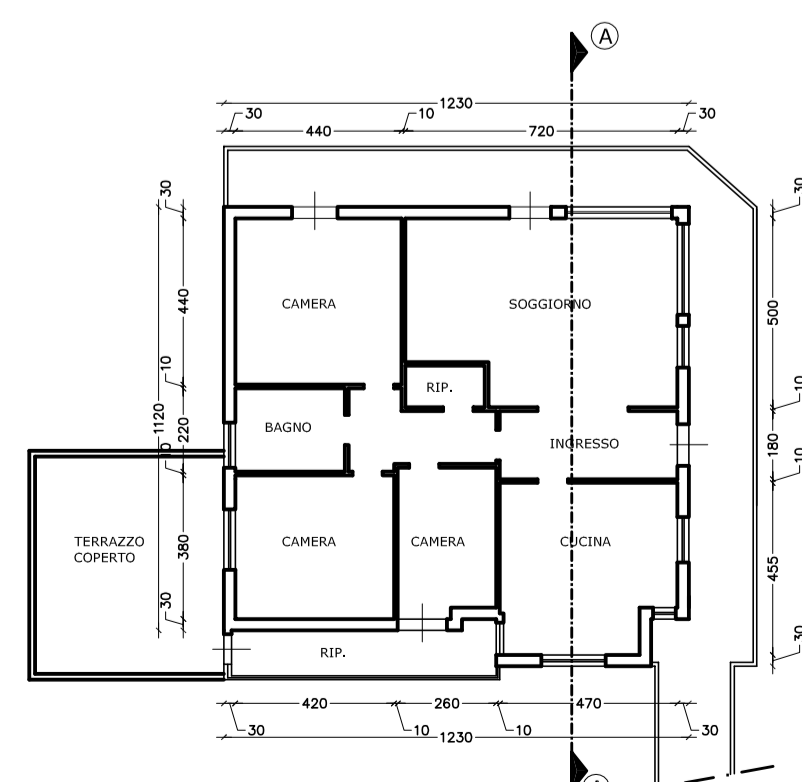
PIANTA PIANO MEZZANINO
scala 1/200



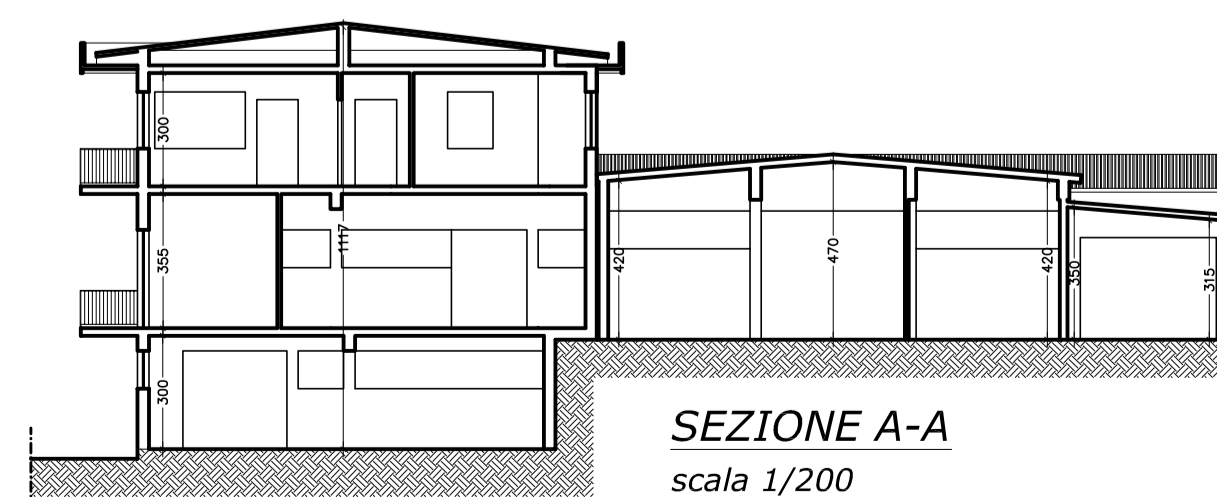
PIANTA PIANO TERRA
scala 1/200



PIANTA PIANO PRIMO
scala 1/200



SEZIONE A-A
scala 1/200



SEZIONE B-B
scala 1/200

